

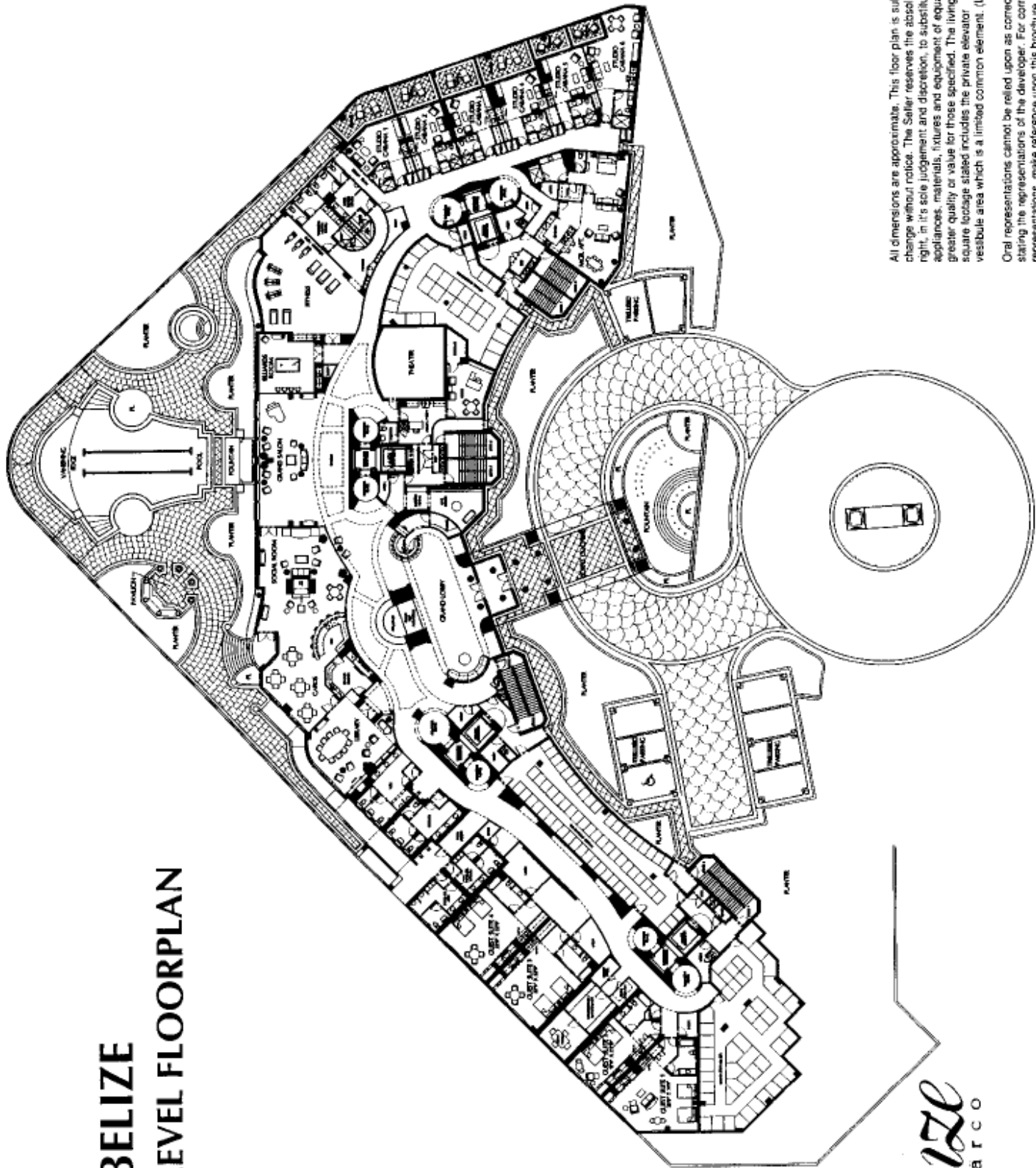
# Belize Site Plan



*Belize*  
CapeMatco

This concept sketch merely indicates Developer's current proposal for development, and is not to be relied upon and is subject to change without notice.

# BELIZE AMENITY LEVEL FLOORPLAN



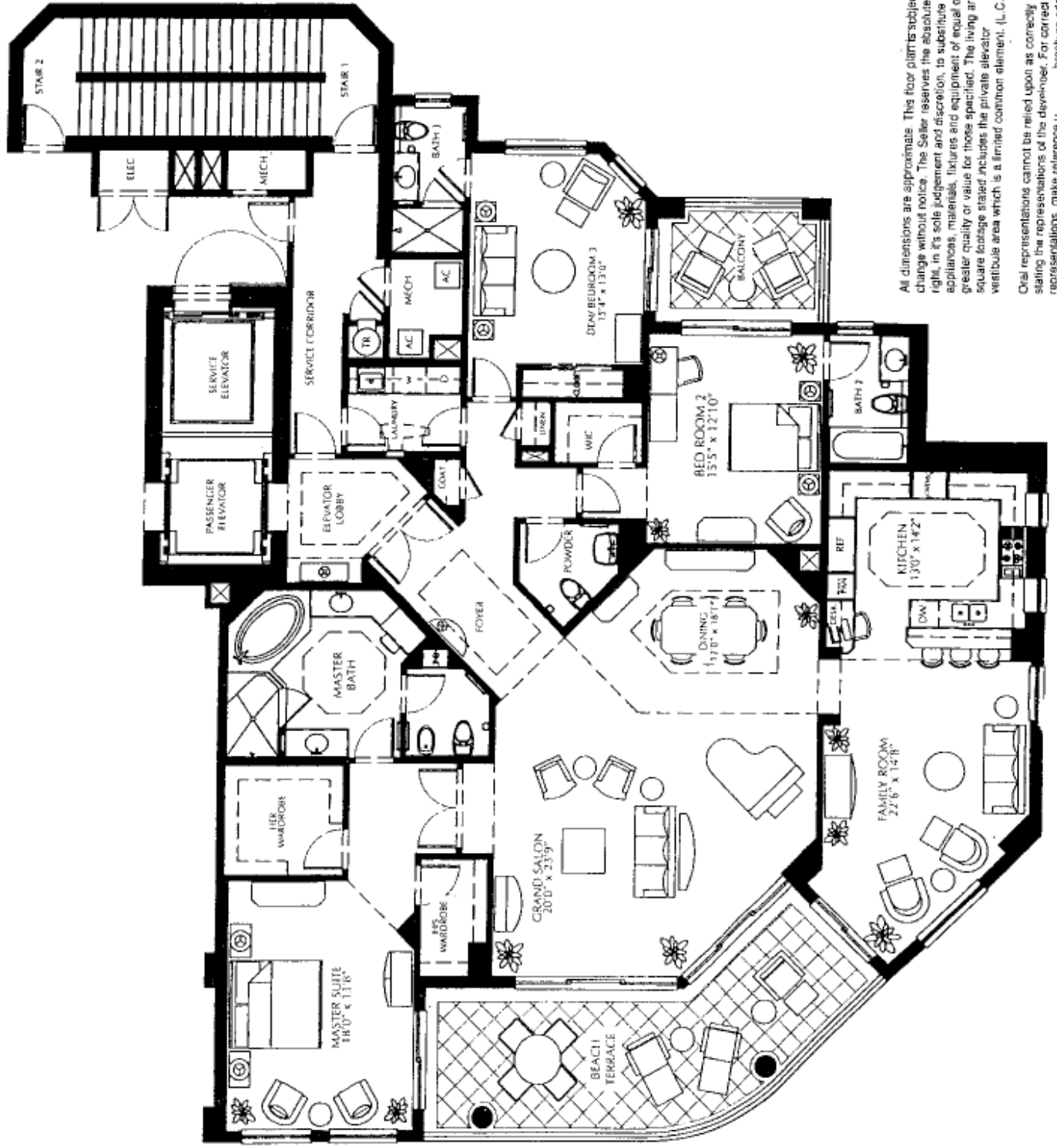
All dimensions are approximate. This floor plan is subject to change without notice. The Seller reserves the absolute right, in its sole judgment and discretion, to substitute appliances, materials, fixtures and equipment of equal or greater quality or value for those specified. The living area square footage stated includes the private elevator vestibule area which is a limited common element. (L.C.E.)

Oral representations cannot be relied upon as correctly stating the representations of the developer. For correct representations, make reference upon this brochure and to the documents required by section 718.503 Florida Statutes, to be furnished by the developer to a buyer.

*Belize*  
Cape Marco

# BELIZE

01 Estate  
2 Bedroom, 3 1/2 Bath,  
Den, Family Room  
Enclosed Area 3,029 Sq.Ft.  
Total Residence 3,503Sq.Ft.



All dimensions are approximate. This floor plan is subject to change without notice. The Seller reserves the absolute right in its sole judgment and discretion, to substitute appliances, materials, fixtures and equipment of equal or greater quality or value for those specified. The living area square footage stated includes the private elevator vestibule area which is a limited common element. (L.C.E.)

Oral representations cannot be relied upon as correctly stating the representations of the developer. For correct representations, make reference to the documents required by section 10 of the Condominium Act, 1997, and to the Statutes, to be furnished by the developer.

*Belize*  
Cape Marco

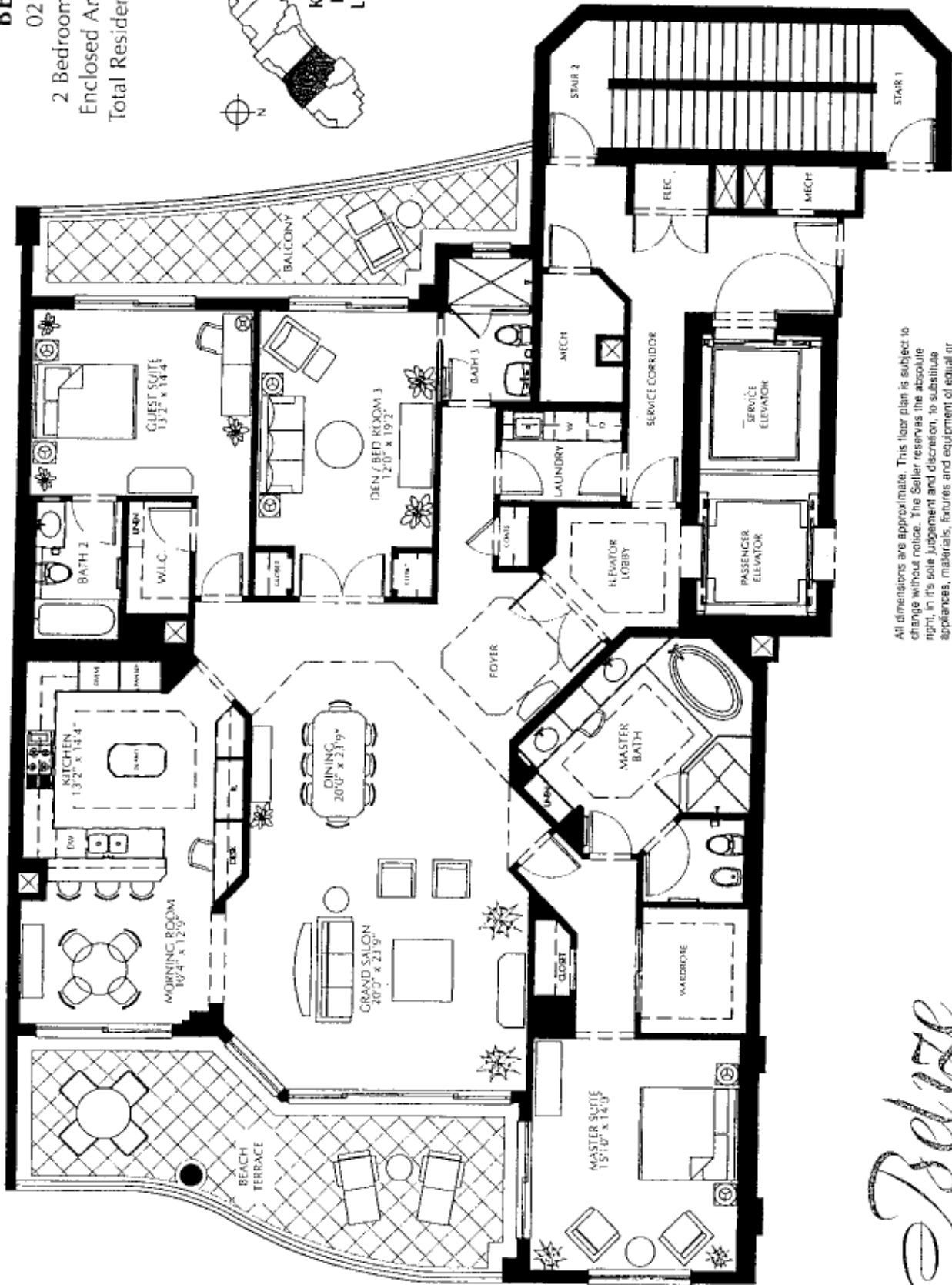
# BELIZE

02 Estate

2 Bedroom, 3 Bath, Den

Enclosed Area 2,680 Sq.Ft.

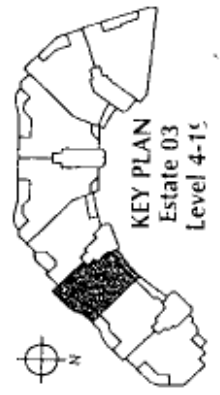
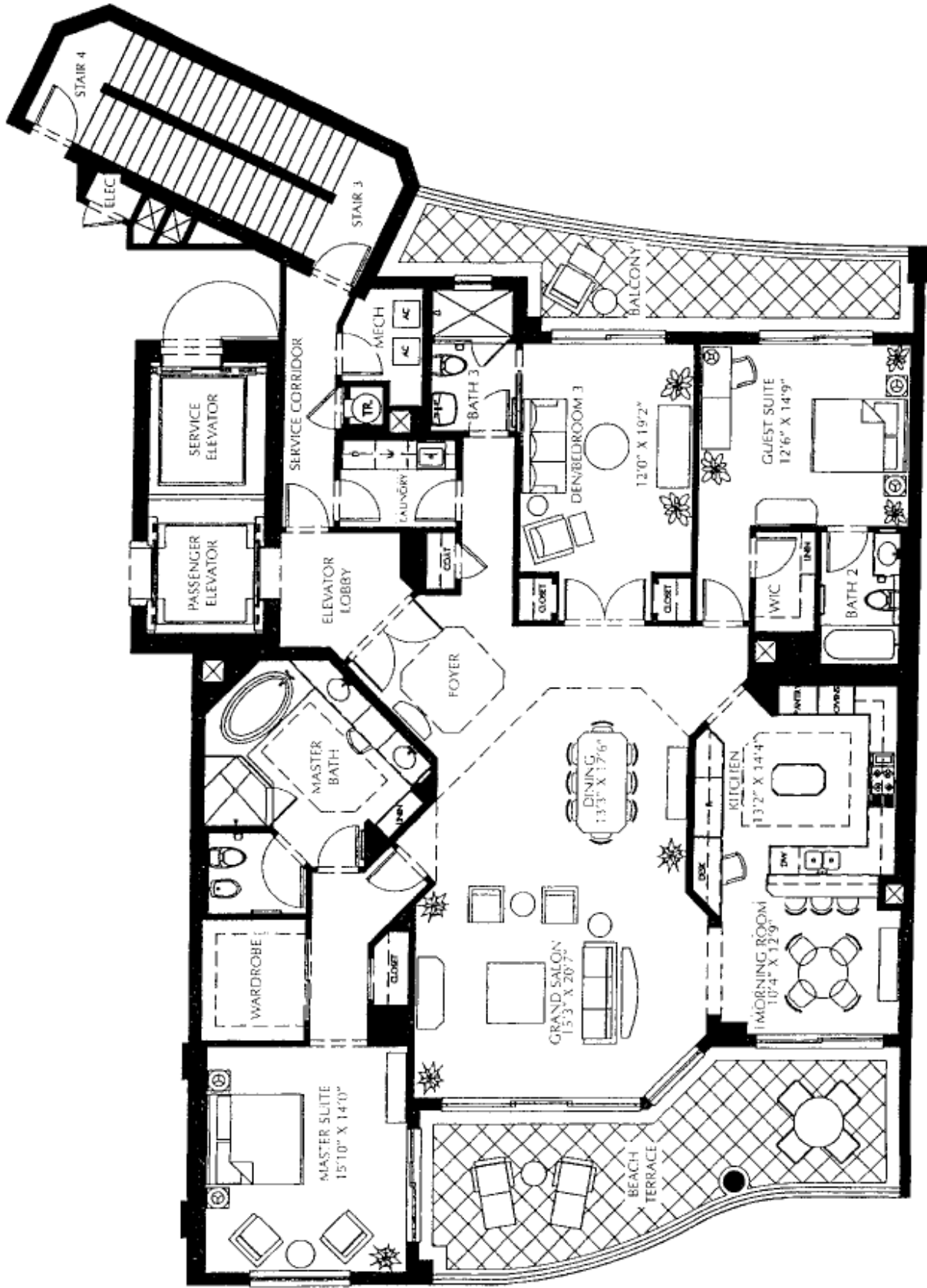
Total Residence 3,326 Sq.Ft.



All dimensions are approximate. This floor plan is subject to change without notice. The Seller reserves the absolute right, in its sole judgement and discretion, to substitute appliances, materials, fixtures and equipment of equal or greater quality or value for those specified. The living area square footage stated includes the private elevator vestibule area which is a limited common element. (L.C.E.)

Oral representations cannot be relied upon as correctly stating the representations of the developer. For correct representations, make reference upon this brochure and to the documents required by section 718.503 Florida Statutes, to be furnished by the developer to a buyer.

*Belize*  
Cape Marco



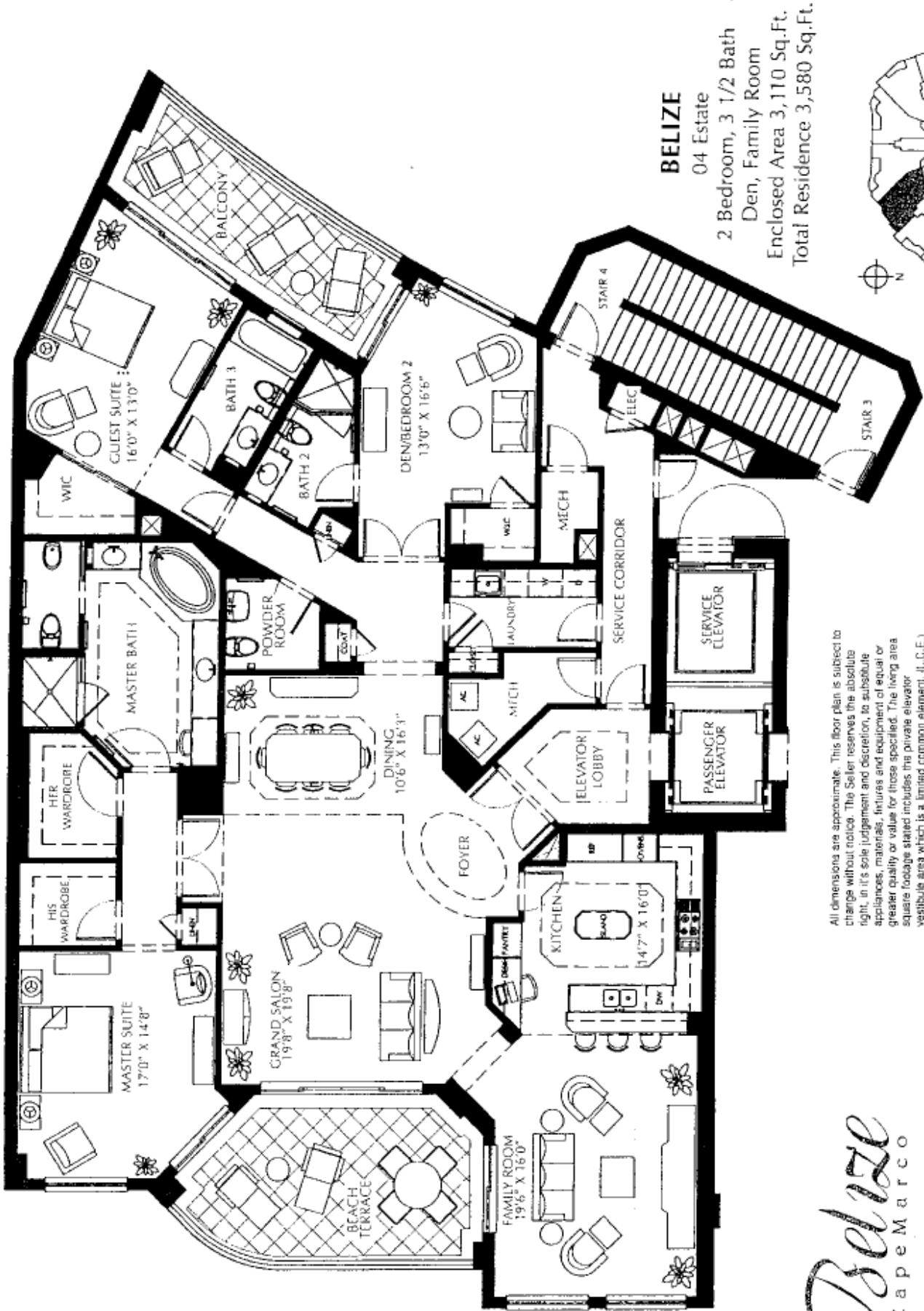
**BELIZE**  
03 Estate

2 Bedroom, Den, 3 Bath  
Enclosed Area 2,680 Sq.Ft.  
Total Residence 3,326 Sq.Ft.

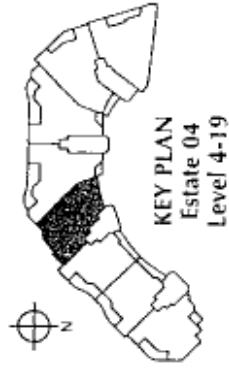
All dimensions are approximate. This floor plan is subject to change without notice. The Seller reserves the absolute right, in its sole judgment and discretion, to substitute appliances, materials, fixtures and equipment of equal or greater quality or value for those specified. The living area square footage stated includes the private elevator vestibule area which is a limited common element. (L.C.E.)

Oral representations cannot be relied upon as correctly stating the representations of the developer. For correct representations, make reference upon this brochure and to the documents required by section 718.503 Florida Statutes, to be furnished by the developer to a buyer.





**BELIZE**  
 04 Estate  
 2 Bedroom, 3 1/2 Bath  
 Den, Family Room  
 Enclosed Area 3,110 Sq.Ft.  
 Total Residence 3,580 Sq.Ft.



**KEY PLAN**  
 Estate 04  
 Level 4-19

All dimensions are approximate. This floor plan is subject to change without notice. The Seller reserves the absolute right, in its sole judgment and discretion, to substitute appliances, materials, fixtures and equipment of equal or greater quality or value for those specified. The living area square footage stated includes the private elevator vestibule area which is a limited common element. (L.C.E.)

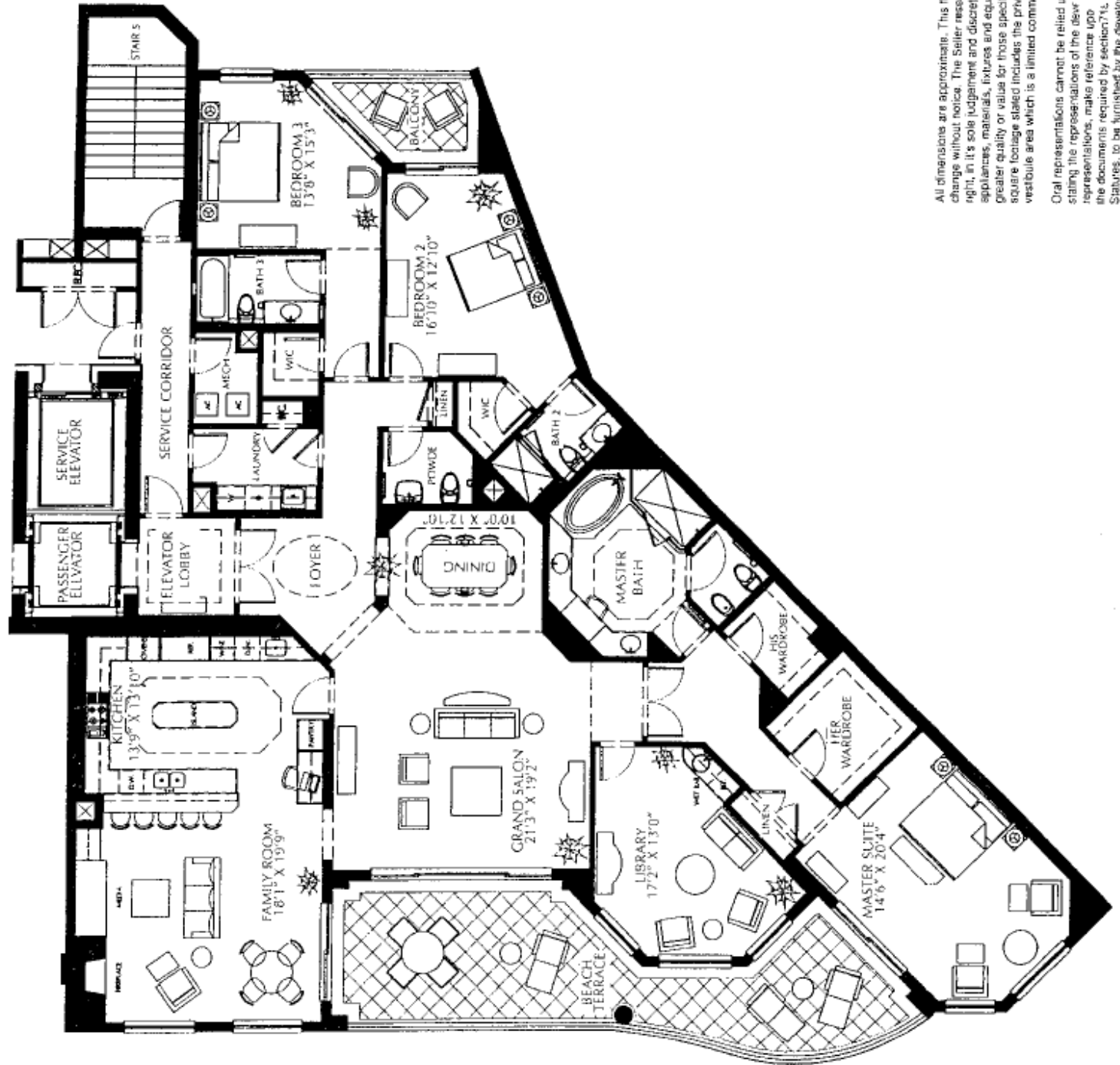
Oral representations cannot be relied upon as correctly stating the representations of the developer. For correct representations, make reference upon this brochure and to the documents required by section 718.503 Florida Statutes, to be furnished by the developer to a buyer.

*Belize*  
 Cape Marco

# BELIZE

05 Estate

3 Bedroom, 3 1/2 Bath  
Library, Family Room  
Enclosed Area 3,600 Sq.Ft.  
Total Residence 4,200 Sq.Ft.



All dimensions are approximate. This floor plan is subject to change without notice. The Seller reserves the absolute right, in its sole judgment and discretion, to substitute appliances, materials, fixtures and equipment of equal or greater quality or value for those specified. The living area square footage stated includes the private elevator vestibule area which is a limited common element. (L.C.E.)

Oral representations cannot be relied upon as correctly stating the representations of the developer. Buyer should carefully review the documents required by section 7.14 of the Condominium Act, 2018, and to the documents required by section 7.14 of the Condominium Act, 2018, to be furnished by the developer to a buyer.

*Belize*  
CAPE MARCO

All dimensions are approximate and subject to change without notice. The floor plan is subject to change without notice. The developer reserves the absolute right, in its sole judgment, to substitute appliances, materials, fixtures and equipment of equal or greater quality or value for those specified. The living area square footage stated includes the private elevator vestibule area which is a limited common element. (L.C.E.)

Oral representations cannot be relied upon as correctly stating the representations of the developer. For correct representations, make reference upon this brochure and to the documents required by section 718.503, Florida Statutes, to be furnished by the developer to a buyer.

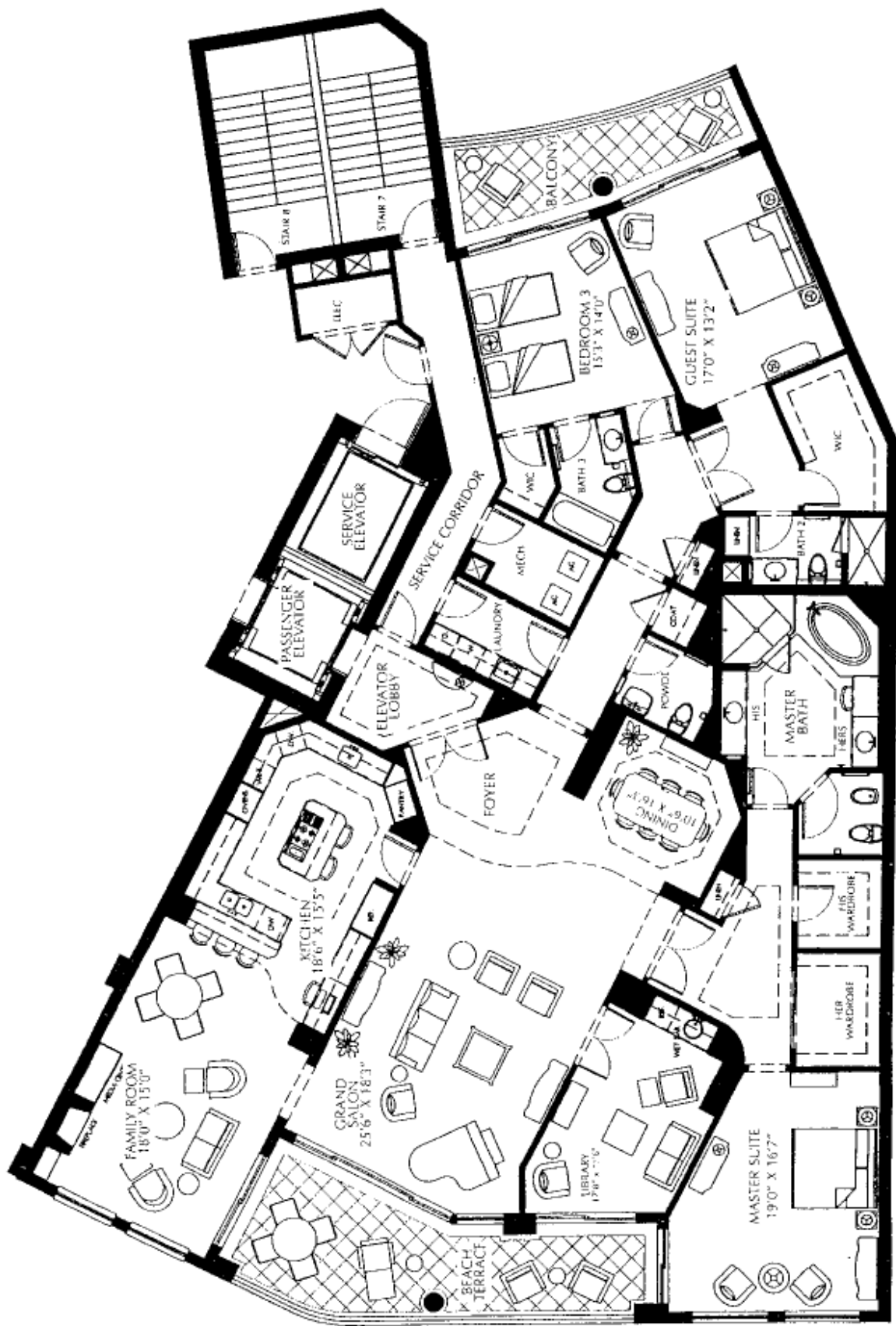


**BELIZE**  
 06 Estate  
 3 Bedroom, 3 1/2 Bath  
 Library, Family Room  
 Enclosed Area 3,600 ACSF  
 Total Residence 4,200 SF



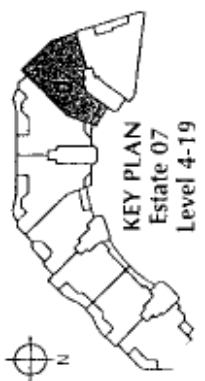
*Belize*  
 Cape Marco





*Belize*  
Cape Marco

**BELIZE**  
07 Estate  
3 Bedroom, 3 1/2 Bath  
Library, Family Room  
Enclosed Area 3,844 Sq. Ft.  
Total Residence 4,347 Sq. Ft.

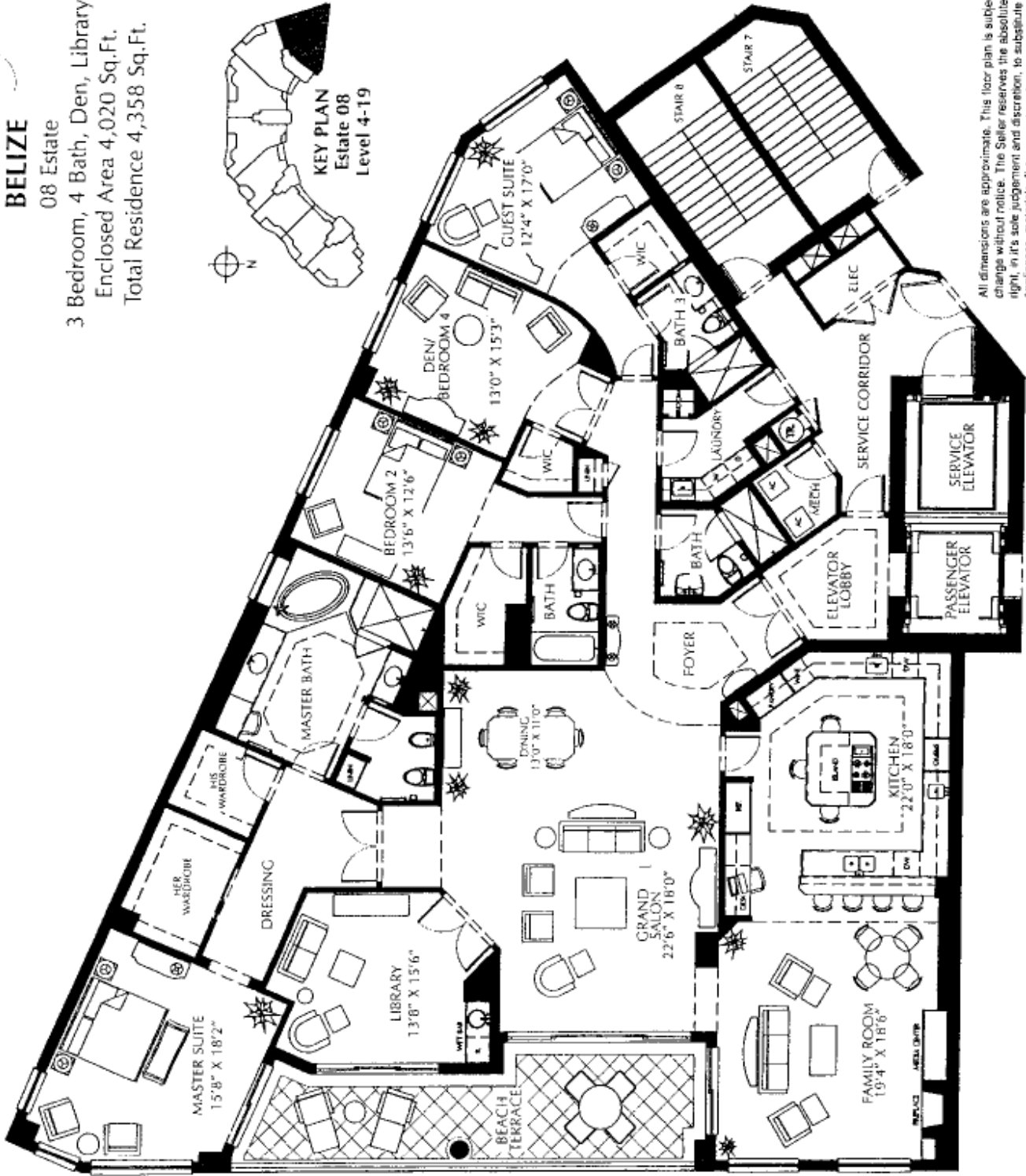


All dimensions are approximate. This floor plan is subject to change without notice. The Seller reserves the absolute right, in its sole judgement and discretion, to substitute appliances, materials, fixtures and equipment of equal or greater quality or value for those specified. The living area square footage stated includes the private elevator vestibule area which is a limited common element. (L.C.E.)  
Oral representations cannot be relied upon as correctly stating the representations of the developer. For correct representations, make reference upon the documents required by section 71b of the Statutes, to be furnished by the developer.

# BELIZE

08 Estate

3 Bedroom, 4 Bath, Den, Library  
Enclosed Area 4,020 Sq.Ft.  
Total Residence 4,358 Sq.Ft.



All dimensions are approximate. This floor plan is subject to change without notice. The Seller reserves the absolute right, in its sole judgment and discretion, to substitute appliances, materials, fixtures and equipment of equal or greater quality or value for those specified. The living area square footage stated includes the private elevator vestibule area which is a limited common element. (L.C.E.)

Oral representations cannot be relied upon as correctly stating the representations of the developer. For correct representations, make reference upon this brochure and to the documents required by section 718.503 Florida Statutes, to be furnished by the developer to a buyer.

*Belize*  
Cape Marco

597-1577

394-4888

498-1100

NAPLES

MARCO

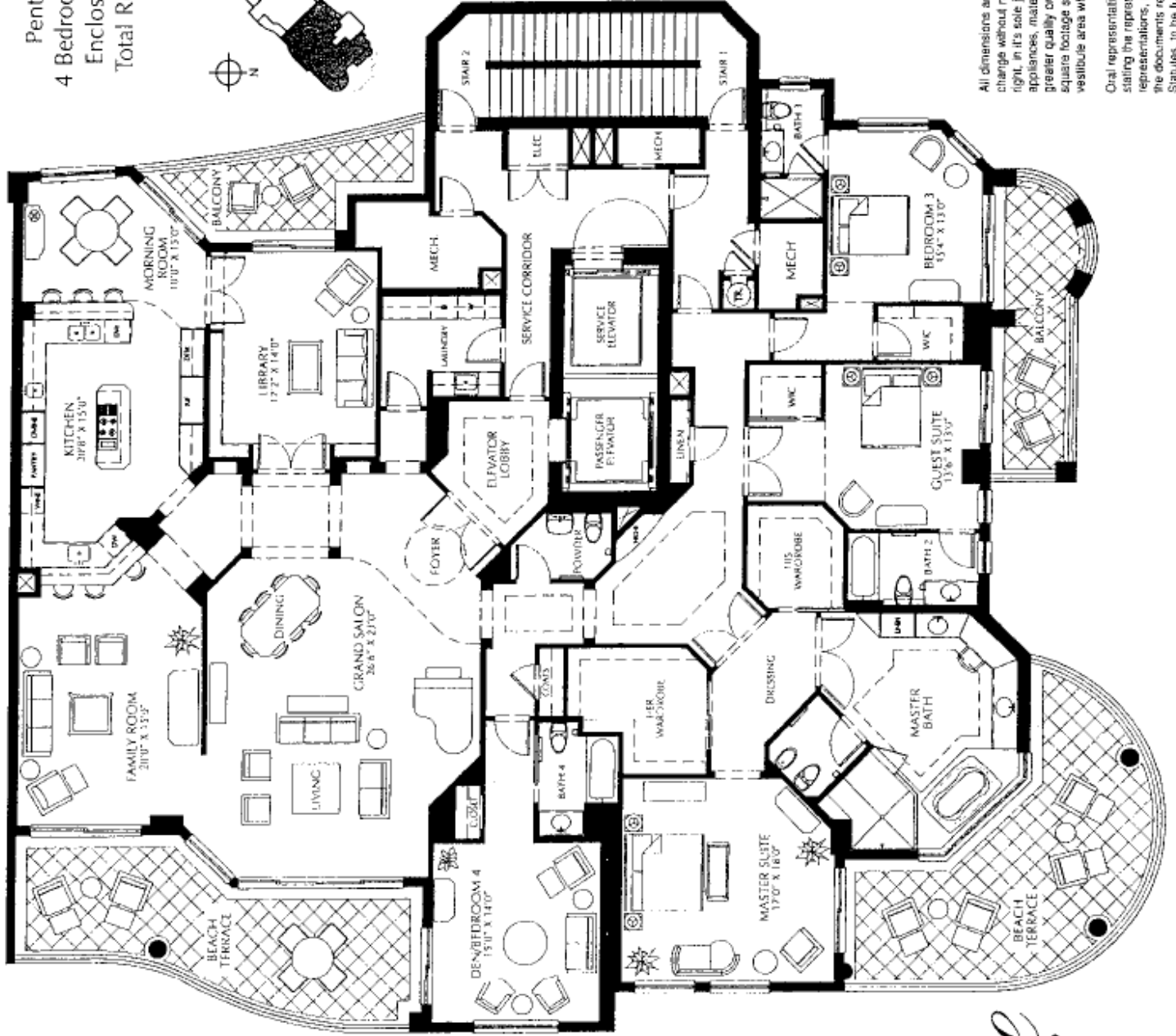
BONITA

# BELIZE

Penthouse 02 Level 21  
4 Bedroom, 4 1/2 Bath, Library  
Enclosed Area 4,765 Sq.Ft.  
Total Residence 5,910 Sq.Ft.



KEY PLAN  
Penthouse 02  
Level 21



All dimensions are approximate. This floor plan is subject to change without notice. The Seller reserves the absolute right, in its sole judgment and discretion, to substitute appliances, materials, fixtures and equipment of equal or greater quality or value for those specified. The living area square footage stated includes the private elevator vestibule area which is a limited common element. (L.C.E.)

Equal representations cannot be relied upon as correctly stating the representations of the developer. For correct representations, make reference upon this brochure and to the documents required by section 718.503 Florida Statutes, to be furnished by the developer to a buyer.

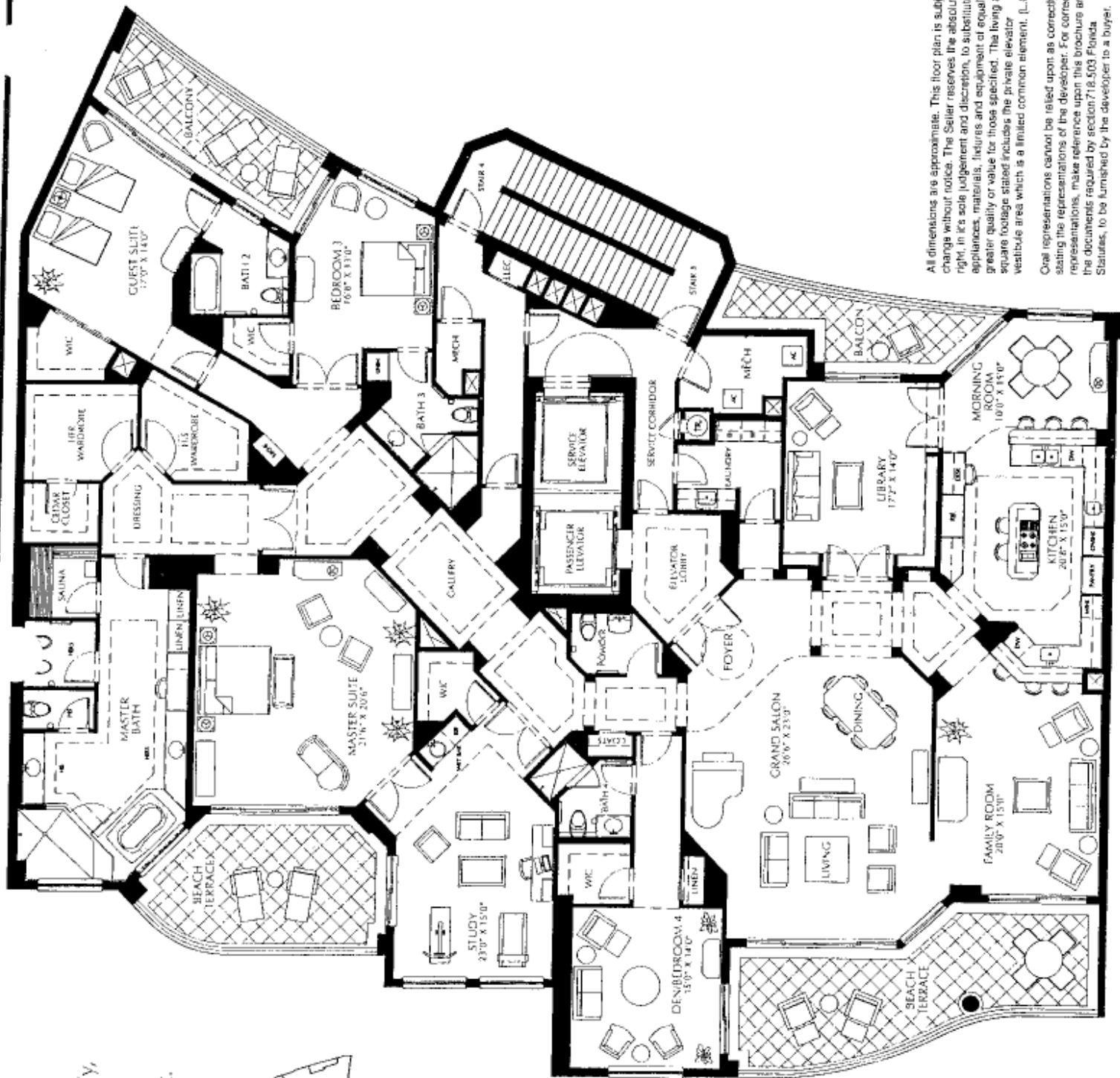
*Belize*  
Cape Marco

# BELIZE

Penthouse 03  
4 Bedroom, 4 1/2 Bath, Study,  
Library, Family Room  
Enclosed Area 5,873 Sq.Ft.  
Total Residence 6,881 Sq.Ft.



KEY PLAN  
Penthouse 03  
Level 22-24



All dimensions are approximate. This floor plan is subject to change without notice. The Seller reserves the absolute right, in its sole judgement and discretion, to substitute appliances, materials, fixtures and equipment of equal or greater quality or value for those specified. The living area square footage stated includes the private elevator vestibule area which is a limited common element. (L.C.E.)

One representation cannot be relied upon as correctly stating the representations of the developer. For correct representations, make reference upon this brochure and to the documents required by section 718.503 Florida Statutes, to be furnished by the developer to a buyer.



